

MEMORANDUM

TO: Board of Trustees

FROM: Kurt R. Buttleman, *Vice Chancellor – Academics & Student Success*

DATE: September 12, 2019

SUBJECT: Academic Year 2018-19 Enrollment Report

This report provides information on Seattle Colleges' academic year 2018-19 student enrollment. Quarter enrollment trends are presented at board meetings at the end of each academic quarter.

Enrollment Analysis of the Academic Year 2018-19

- **Total FTES.** Seattle Colleges exhibited a decrease in total FTES over the last 5 years (Tables 1A and 1B). Total FTES includes not only state-funded students but also students from other fund sources. Compared to the last 5 years average, Seattle Central had a decrease of 5%, which is the same rate as the system. South decreased 8%, and North decreased 16%.
- **State FTES.** 32 out of 34 system colleges had decreases in *State* FTES over the last 5 years. The system decrease was 9%. Seattle Central had a 3% decrease over the last 5 years and ranked 5th in the system. While most of the colleges experienced decreases, Green River and Bates exceeded the baseline with 1% (Tables 2A and 2B).
- **State allocations.** The Seattle Colleges continues to represent a significant portion of the entire state system's enrollment allocations, but over the years, that portion has decreased from 11% to 10% of the state's entire allocations (Charts 1 and 2). The decrease translates to about 1,074 fewer FTES allocated to Seattle Colleges and less revenue from the SBCTC funding formula (Table 3A).
- **State allocations, system and peers.** The 2018-19 state FTES allocation for Seattle Colleges decreased 7% since the 2014-15 academic year (or 5% compared to the last 5 year average allocation); this is lower than and opposite to the system trend which did not have a change over the last 5 years. Peers in the Greater Seattle area, such as Bellevue, Everett, Renton, Highline, and Tacoma, all increased from 1% up to 22% (or 14% based on the last 5 years average) (Tables 3A and 3B).
- **Target attainment.** Seattle Colleges' 2018-19 academic year actual enrollment was 12% less than the target allocation set by the state. The state system as a whole was 11% less than its target. Seattle Colleges had a 2% decrease in attainment rate over 5 years, which outperformed 30 other colleges in the state system (or 26 using the last 5 year average attainment rate as baseline) (Tables 4A and 4B).

- **Target attainment compared to peers.** Compared to selected peer community colleges, over the last 5 years, Seattle Colleges' allocation attainment rates have recovered somewhat. While other colleges have dropped significantly, Seattle Colleges' rate has more recently mirrored system trends. Despite declines, peers in the Greater Seattle area, such as Pierce, have maintained overall high allocation attainment rates (Chart 3).
- **Target attainment rate 2018-19 compared to last three years average attainment rate.** Seattle Colleges achieved 96% of the last 3 years average attainment rate from 2016 to 2018, which is ranked as 8th of 29 system colleges or districts (Table 5).

Enrollment Analysis of Special Populations

- **International.** International FTES decreased for the 3 Seattle Colleges. North Seattle College had the relative decrease in FTES (46%, Table 6B with last 4 years average as baseline) (or 54% in Table 6A with 2014-15 as baseline). Other peer colleges decreased as well, but the decrease was not as large as Seattle Colleges (Chart 4). It should be noted that Renton and Lake Washington experienced small increases over the same 5 year period.
- **eLearning.** All 3 Seattle Colleges experienced increases in eLearning FTES over the five years. Seattle Central College saw an increase from 786 to 1,794 or 128% (or 67% using the last 5 years average baseline), which was the second largest increase statewide (Tables 7A and 7B). Peers, such as Bellevue, Edmonds, and Green River still had more FTES than the Seattle Colleges, suggesting that Seattle Colleges could do more to gain eLearning FTES (Charts 5 and 6). The percentage of eLearning FTES over Total FTES at North Seattle College is 39%, which is higher than the percentage of the whole system.
- **Running Start.** The Seattle Colleges experienced large increases in Running Start FTES and were among the state's biggest gainers over time (Tables 8A and 8B). Nevertheless, Seattle Colleges' Running Start percent of total FTES remained low (6-7%) compared to peers in the region, such as Green River (19%), Bellevue (18%), Edmonds (11%), Highline (17%), and Everett (15%) (Chart 7).
- **Apprenticeships.** South Seattle College continues to lead the state with the largest numbers of Apprenticeship FTES. Due to its location and programmatic focus of the Georgetown Campus, South Seattle College is well positioned to maintain growth in this area (Tables 9A and 9B).
- **Adult Basic Education (ABE):** Seattle Central College exhibited 5% (or 3% using the last 5 years average as baseline) increase in Adult Basic Education FTES over last 5 years. North Seattle College had a relatively small decrease. Nevertheless, South Seattle College experienced a large decrease in Adult Basic Education FTES (41%) (or 36% using the last 5

years average as baseline) (Tables 10A and 10B). Peers in the Greater Seattle area, such as Bellevue, Green River, and Lake Washington had larger increases than the Seattle Colleges.

- **Bachelor of Applied Science (BAS):** North Seattle College continued a large increase in BAS FTES (375%, Table 11A). Seattle Central College also exhibited a sizeable increase over the years. South Seattle College showed a decrease (32%) in BAS FTES. It is worth investigating the reasons leading to this abrupt decrease.

Summary

- Compared to peers in the Greater Seattle area, such as Highline, Shoreline, Renton, Everett, Green River, Edmonds, and Bellevue, Seattle Colleges enrolled fewer FTES in Running Start, eLearning, and ABE. eLearning presents a potentially large opportunity to gain FTES.

Table 1A: Actual Total FTES, by College 2014-15 as Baseline

Colleges	2014-15	2015-16	2016-17	2017-18	2018-19	Change '15 to '19	% of Change '15 to '19
Bates	3,451	3,520	3,671	3,577	3,827	377	11%
Cascadia	2,681	2,967	2,953	2,895	2,749	68	3%
South Puget Sound	4,388	4,381	4,477	4,454	4,483	95	2%
Big Bend	1,968	2,090	2,068	1,957	2,000	32	2%
Pierce Fort Steilacoom	5,155	5,237	5,194	5,119	5,211	57	1%
Green River	9,064	9,017	8,957	9,024	9,158	95	1%
Columbia Basin	5,929	5,828	5,738	5,795	5,938	9	0%
Yakima Valley	4,504	4,290	4,377	4,268	4,498	-6	0%
Bellingham	2,166	2,292	2,288	2,200	2,131	-35	-2%
Lake Washington	3,458	3,365	3,397	3,418	3,399	-59	-2%
Wenatchee Valley	3,230	3,086	3,247	3,214	3,171	-59	-2%
Bellevue	12,339	12,689	12,405	12,108	12,107	-233	-2%
Skagit Valley	4,357	4,447	4,368	4,282	4,243	-114	-3%
Highline	7,905	7,890	8,118	8,197	7,665	-241	-3%
Whatcom	3,999	4,096	4,102	4,039	3,870	-128	-3%
Pierce Puyallup	3,211	3,289	3,315	3,331	3,106	-104	-3%
Everett	7,993	7,814	7,906	7,892	7,722	-271	-3%
Clover Park	4,463	4,390	4,200	4,159	4,253	-210	-5%
Spokane	9,434	9,630	9,409	9,273	8,924	-510	-5%
Shoreline	5,565	5,467	5,500	5,607	5,264	-302	-5%
Olympic	6,205	5,939	5,765	5,776	5,774	-430	-7%
Centralia	2,848	2,740	2,664	2,636	2,643	-204	-7%
Lower Columbia	3,300	3,340	3,126	3,164	3,034	-266	-8%
Renton	4,141	4,176	4,015	4,138	3,806	-335	-8%
Seattle South	5,729	5,946	5,758	5,701	5,234	-496	-9%
Grays Harbor	2,246	2,272	2,142	2,095	2,049	-197	-9%
Seattle Central	7,634	7,010	6,824	6,984	6,864	-770	-10%
Edmonds	8,586	8,098	7,734	7,541	7,421	-1,166	-14%
Peninsula	2,320	2,205	2,137	2,079	1,993	-328	-14%
Tacoma	7,180	6,856	6,495	6,182	6,016	-1,164	-16%
Spokane Falls	5,230	4,885	4,810	4,736	4,374	-856	-16%
Walla Walla	5,070	4,920	4,663	4,574	4,232	-839	-17%
Clark	9,802	9,345	9,160	8,971	8,045	-1,757	-18%
Seattle North	5,494	5,296	5,218	4,875	4,447	-1,047	-19%
System Total	181,451	179,197	176,538	174,300	169,652	-11,799	-7%

Table 1B: Actual Total FTES, by College Last 5 Year Average as Baseline

Colleges	2014-15	2015-16	2016-17	2017-18	2018-19	Change '19 to L5YAVG	% of Change '19 to L5YAVG
Bates	3,451	3,520	3,671	3,577	3,827	139	4%
Yakima Valley	4,504	4,290	4,377	4,268	4,498	118	3%
Green River	9,064	9,017	8,957	9,024	9,158	152	2%
South Puget Sound	4,388	4,381	4,477	4,454	4,483	64	1%
Columbia Basin	5,929	5,828	5,738	5,795	5,938	79	1%
Spokane	9,434	9,630	9,409	9,273	8,924	99	1%
Big Bend	1,968	2,090	2,068	1,957	2,000	-8	0%
Pierce Fort Steilacoom	5,155	5,237	5,194	5,119	5,211	-23	0%
Lake Washington	3,458	3,365	3,397	3,418	3,399	-55	-2%
Wenatchee Valley	3,230	3,086	3,247	3,214	3,171	-58	-2%
Everett	7,993	7,814	7,906	7,892	7,722	-160	-2%
Clover Park	4,463	4,390	4,200	4,159	4,253	-91	-2%
Cascadia	2,681	2,967	2,953	2,895	2,749	-70	-2%
Skagit Valley	4,357	4,447	4,368	4,282	4,243	-107	-2%
Bellevue	12,339	12,689	12,405	12,108	12,107	-313	-3%
Bellingham	2,166	2,292	2,288	2,200	2,131	-65	-3%
Pierce Puyallup	3,211	3,289	3,315	3,331	3,106	-100	-3%
Olympic	6,205	5,939	5,765	5,776	5,774	-211	-4%
Highline	7,905	7,890	8,118	8,197	7,665	-344	-4%
Centralia	2,848	2,740	2,664	2,636	2,643	-123	-4%
Seattle Central	7,634	7,010	6,824	6,984	6,864	-355	-5%
Whatcom	3,999	4,096	4,102	4,039	3,870	-202	-5%
Shoreline	5,565	5,467	5,500	5,607	5,264	-277	-5%
Lower Columbia	3,300	3,340	3,126	3,164	3,034	-217	-7%
Grays Harbor	2,246	2,272	2,142	2,095	2,049	-152	-7%
Renton	4,141	4,176	4,015	4,138	3,806	-289	-7%
Edmonds	8,586	8,098	7,734	7,541	7,421	-668	-8%
Seattle South	5,729	5,946	5,758	5,701	5,234	-478	-8%
Peninsula	2,320	2,205	2,137	2,079	1,993	-250	-11%
Tacoma	7,180	6,856	6,495	6,182	6,016	-769	-11%
Walla Walla	5,070	4,920	4,663	4,574	4,232	-673	-14%
Clark	9,802	9,345	9,160	8,971	8,045	-1,423	-15%
Seattle North	5,494	5,296	5,218	4,875	4,447	-842	-16%
Spokane Falls	5,230	4,885	4,810	4,736	4,374	-1,179	-21%
System Total	181,451	179,197	176,538	174,300	169,652	-9,180	-5%

Table 2A: Actual State Funded FTES, by College 2014-15 as Baseline

Colleges	2014-15	2015-16	2016-17	2017-18	2018-19	18-19 % of Total FTES	Change '15 to '19	% of Change '15 to '19
Bates	3,088	3,149	3,189	3,049	3,290	86%	203	7%
Green River	5,235	5,052	5,095	5,205	5,261	57%	27	1%
Seattle Central	4,855	4,686	4,661	4,820	4,795	70%	-61	-1%
Lake Washington	2,995	2,922	2,973	2,994	2,926	86%	-69	-2%
Yakima Valley	3,916	3,784	3,810	3,613	3,797	84%	-119	-3%
Pierce Fort								
Steilacoom	3,257	3,228	3,232	3,284	3,140	60%	-117	-4%
Clover Park	4,189	4,160	3,962	3,915	3,941	93%	-249	-6%
Columbia Basin	4,959	4,848	4,843	4,745	4,651	78%	-309	-6%
Highline	6,005	5,980	6,055	6,068	5,575	73%	-430	-7%
Bellingham	2,021	2,101	2,051	1,963	1,871	88%	-151	-7%
Bellevue	8,244	7,954	7,755	7,761	7,620	63%	-624	-8%
Skagit Valley	3,858	3,920	3,697	3,566	3,565	84%	-293	-8%
Wenatchee Valley	2,558	2,531	2,548	2,385	2,357	74%	-201	-8%
Big Bend	1,674	1,725	1,648	1,556	1,530	76%	-144	-9%
Renton	3,806	3,847	3,759	3,840	3,464	91%	-342	-9%
South Puget Sound	3,531	3,417	3,357	3,292	3,208	72%	-323	-9%
Seattle South	4,450	4,580	4,535	4,490	4,030	77%	-420	-9%
Everett	5,491	5,357	5,145	5,184	4,970	64%	-521	-9%
Cascadia	1,865	1,889	1,877	1,853	1,683	61%	-182	-10%
Spokane	8,457	8,627	8,269	8,091	7,592	85%	-865	-10%
Seattle North	3,941	3,807	3,888	3,712	3,524	79%	-417	-11%
Grays Harbor	1,659	1,681	1,565	1,510	1,468	72%	-190	-11%
Edmonds	4,903	4,763	4,515	4,345	4,303	58%	-600	-12%
Centralia	2,183	2,017	1,950	1,907	1,900	72%	-284	-13%
Whatcom	2,433	2,440	2,371	2,284	2,106	54%	-326	-13%
Olympic	5,513	5,218	4,929	4,827	4,757	82%	-756	-14%
Pierce Puyallup	2,387	2,310	2,313	2,253	2,033	65%	-354	-15%
Spokane Falls	4,434	4,187	4,043	3,958	3,730	85%	-704	-16%
Lower Columbia	2,905	2,712	2,460	2,457	2,384	79%	-521	-18%
Walla Walla	3,126	3,077	2,834	2,782	2,542	60%	-584	-19%
Peninsula	1,677	1,591	1,409	1,395	1,326	67%	-350	-21%
Clark	7,337	6,628	6,369	6,031	5,767	72%	-1,570	-21%
Tacoma	5,971	5,649	5,170	4,757	4,499	75%	-1,471	-25%
Shoreline	4,971	4,909	3,973	4,062	3,689	70%	-1,283	-26%
System Total	138,279	135,108	130,577	127,994	123,292	73%	-14,987	-11%

Table 2B: Actual State Funded FTES, by College Last 5 Year Average as Baseline

Colleges	2014-15	2015-16	2016-17	2017-18	2018-19	18-19 % of Total FTES	Change '19 to L5YAVG	% of Change '19 to L5YAVG
Bates	3,088	3,149	3,189	3,049	3,290	86%	31	1%
Green River	5,235	5,052	5,095	5,205	5,261	57%	38	1%
Yakima Valley	3,916	3,784	3,810	3,613	3,797	84%	-25	-1%
Lake Washington	2,995	2,922	2,973	2,994	2,926	86%	-74	-2%
Seattle Central	4,855	4,686	4,661	4,820	4,795	70%	-137	-3%
Pierce Fort Steilacoom	3,257	3,228	3,232	3,284	3,140	60%	-110	-3%
Spokane	8,457	8,627	8,269	8,091	7,592	85%	-289	-4%
Clover Park	4,189	4,160	3,962	3,915	3,941	93%	-154	-4%
Columbia Basin	4,959	4,848	4,843	4,745	4,651	78%	-236	-5%
Skagit Valley	3,858	3,920	3,697	3,566	3,565	84%	-208	-6%
Everett	5,491	5,357	5,145	5,184	4,970	64%	-296	-6%
Bellevue	8,244	7,954	7,755	7,761	7,620	63%	-473	-6%
Bellingham	2,021	2,101	2,051	1,963	1,871	88%	-140	-7%
South Puget Sound	3,531	3,417	3,357	3,292	3,208	72%	-246	-7%
Wenatchee Valley	2,558	2,531	2,548	2,385	2,357	74%	-195	-8%
Highline	6,005	5,980	6,055	6,068	5,575	73%	-470	-8%
Centralia	2,183	2,017	1,950	1,907	1,900	72%	-163	-8%
Big Bend	1,674	1,725	1,648	1,556	1,530	76%	-137	-8%
Olympic	5,513	5,218	4,929	4,827	4,757	82%	-438	-8%
Renton	3,806	3,847	3,759	3,840	3,464	91%	-340	-9%
Seattle North	3,941	3,807	3,888	3,712	3,524	79%	-350	-9%
Edmonds	4,903	4,763	4,515	4,345	4,303	58%	-432	-9%
Grays Harbor	1,659	1,681	1,565	1,510	1,468	72%	-148	-9%
Cascadia	1,865	1,889	1,877	1,853	1,683	61%	-204	-11%
Seattle South	4,450	4,580	4,535	4,490	4,030	77%	-501	-11%
Pierce Puyallup	2,387	2,310	2,313	2,253	2,033	65%	-259	-11%
Lower Columbia	2,905	2,712	2,460	2,457	2,384	79%	-310	-12%
Whatcom	2,433	2,440	2,371	2,284	2,106	54%	-300	-12%
Peninsula	1,677	1,591	1,409	1,395	1,326	67%	-239	-15%
Clark	7,337	6,628	6,369	6,031	5,767	72%	-1,094	-16%
Walla Walla	3,126	3,077	2,834	2,782	2,542	60%	-490	-16%
Tacoma	5,971	5,649	5,170	4,757	4,499	75%	-1,033	-19%
Shoreline	4,971	4,909	3,973	4,062	3,689	70%	-898	-20%
Spokane Falls	4,434	4,187	4,043	3,958	3,730	85%	-954	-20%
System Total	138,279	135,108	130,577	127,994	123,292	73%	-11,591	-9%

CHART 1: ALLOCATIONS AS % OF STATE 2014-15

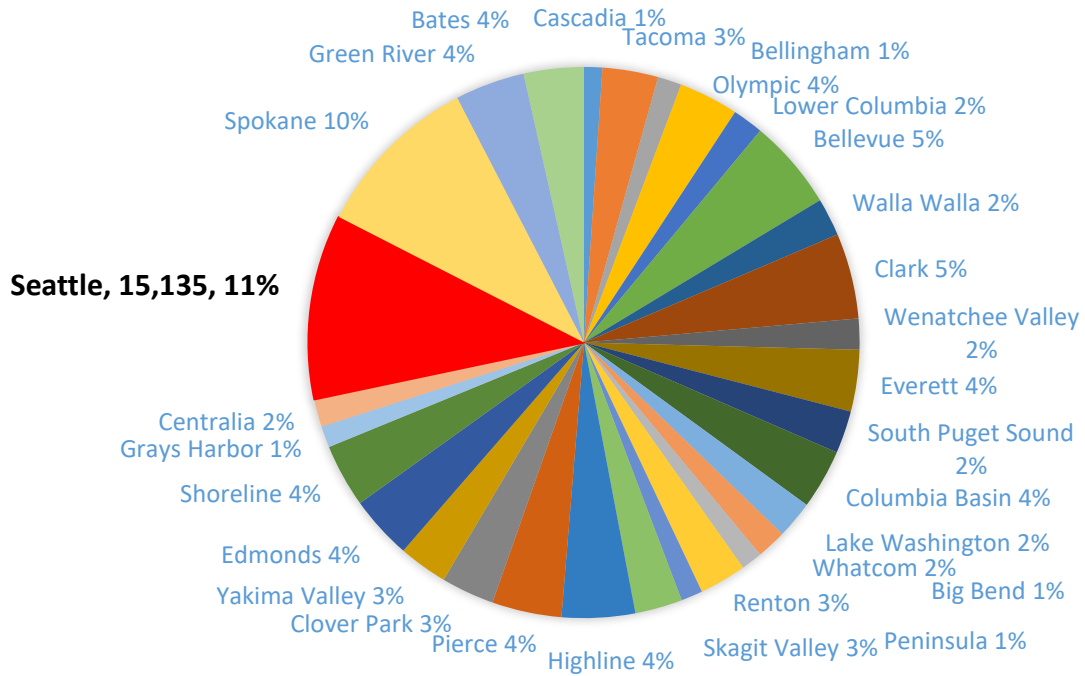


CHART 2: ALLOCATIONS AS % OF STATE 2018-19

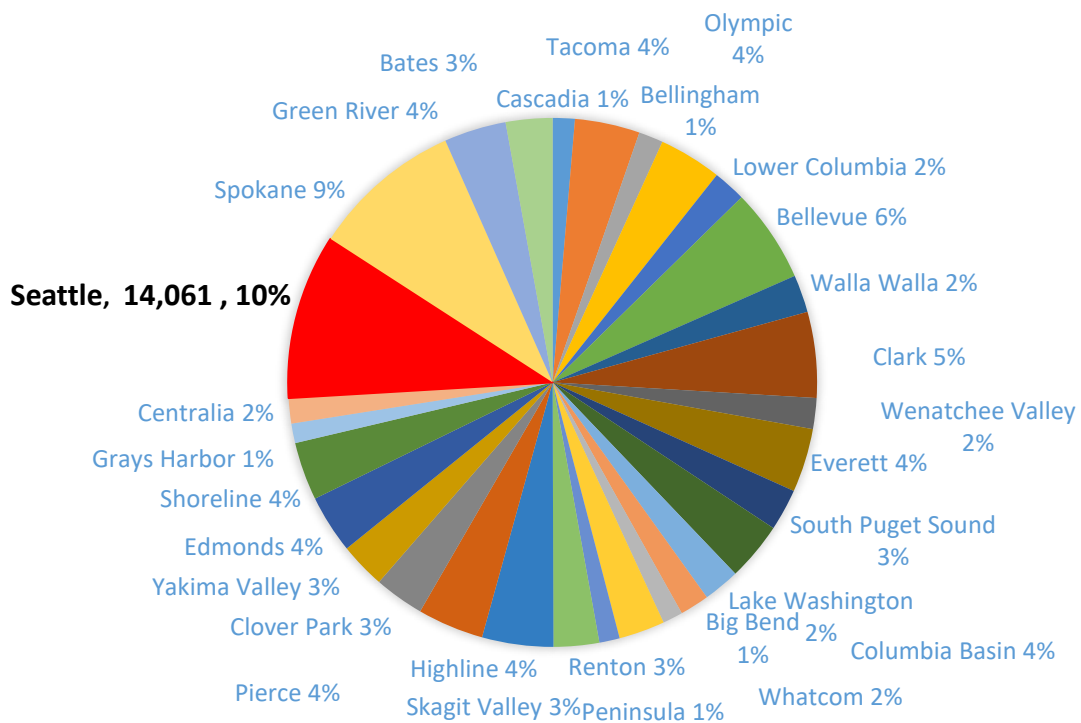


Table 3A: State FTES Allocation 2014-15 as Baseline

Colleges/District	2014-15	2015-16	2016-17	2017-18	2018-19	Change '15 to '19	% of Change '15 to '19
Cascadia	1,494	1,505	1,634	1,793	1,886	392	26%
Tacoma	4,556	4,585	5,089	5,596	5,537	981	22%
Lower Columbia	2,524	2,557	2,675	2,772	2,792	268	11%
Olympic	4,893	4,937	5,191	5,361	5,365	472	10%
Everett	5,040	5,059	5,163	5,335	5,446	406	8%
Bellevue	7,422	7,489	7,743	8,101	8,012	590	8%
Bellingham	1,952	1,987	1,987	2,004	2,086	134	7%
Clark	7,003	7,027	7,364	7,336	7,313	310	4%
Wenatchee Valley	2,534	2,513	2,597	2,634	2,633	99	4%
Walla Walla	3,103	3,133	3,208	3,194	3,204	101	3%
Whatcom	2,435	2,439	2,484	2,456	2,493	58	2%
South Puget Sound	3,480	3,457	3,543	3,568	3,561	81	2%
Columbia Basin	4,890	4,895	4,939	4,986	4,992	102	2%
Renton	3,853	3,815	3,837	3,898	3,930	77	2%
Lake Washington	3,066	3,073	3,084	3,087	3,108	42	1%
Highline	5,999	5,980	6,056	6,069	6,074	75	1%
Skagit Valley	3,876	3,902	3,867	3,887	3,883	7	0%
Big Bend	1,727	1,725	1,748	1,754	1,714	-13	-1%
Pierce	5,699	5,669	5,647	5,646	5,645	-54	-1%
Peninsula	1,768	1,761	1,779	1,741	1,735	-33	-2%
Clover Park	4,347	4,369	4,348	4,226	4,247	-100	-2%
Yakima Valley	4,017	4,000	4,017	3,910	3,913	-104	-3%
Shoreline	5,181	5,181	5,051	4,952	4,960	-221	-4%
Edmonds	5,193	5,197	5,204	4,985	4,968	-225	-4%
Grays Harbor	1,747	1,747	1,644	1,669	1,665	-82	-5%
Centralia	2,268	2,266	2,237	2,158	2,160	-108	-5%
Spokane	13,769	13,764	13,112	12,826	12,868	-901	-7%
Green River	5,696	5,667	5,540	5,321	5,293	-403	-7%
Seattle	15,135	15,131	14,298	14,184	14,061	-1074	-7%
Bates	4,917	4,715	4,465	4,236	3,976	-941	-19%
System Total	139,584	139,545	139,551	139,685	139,520	-64	0%

Table 3B: State FTES Allocation Last 5 Year Average as Baseline

Colleges/District	2014-15	2015-16	2016-17	2017-18	2018-19	Change '19 to L5YAVG	% of Change '19 to L5YAVG
Cascadia	1,494	1,505	1,634	1,793	1886	301	19%
Tacoma	4,556	4,585	5,089	5,596	5537	663	14%
Lower Columbia	2,524	2,557	2,675	2,772	2792	181	7%
Bellingham	1,952	1,987	1,987	2,004	2086	133	7%
Olympic	4,893	4,937	5,191	5,361	5365	325	6%
Everett	5,040	5,059	5,163	5,335	5446	281	5%
Bellevue	7,422	7,489	7,743	8,101	8012	376	5%
Wenatchee Valley	2,534	2,513	2,597	2,634	2633	75	3%
Clark	7,003	7,027	7,364	7,336	7313	176	2%
Walla Walla	3,103	3,133	3,208	3,194	3204	70	2%
Renton	3,853	3,815	3,837	3,898	3930	71	2%
Whatcom	2,435	2,439	2,484	2,456	2493	41	2%
South Puget Sound	3,480	3,457	3,543	3,568	3561	58	2%
Columbia Basin	4,890	4,895	4,939	4,986	4992	74	2%
Lake Washington	3,066	3,073	3,084	3,087	3108	38	1%
Highline	5,999	5,980	6,056	6,069	6074	47	1%
Skagit Valley	3,876	3,902	3,867	3,887	3883	6	0%
Pierce	5,699	5,669	5,647	5,646	5645	-21	0%
Big Bend	1,727	1,725	1,748	1,754	1714	-13	-1%
Peninsula	1,768	1,761	1,779	1,741	1735	-18	-1%
Clover Park	4,347	4,369	4,348	4,226	4247	-64	-1%
Yakima Valley	4,017	4,000	4,017	3,910	3913	-79	-2%
Grays Harbor	1,747	1,747	1,644	1,669	1665	-45	-3%
Shoreline	5,181	5,181	5,051	4,952	4960	-145	-3%
Edmonds	5,193	5,197	5,204	4,985	4968	-173	-3%
Centralia	2,268	2,266	2,237	2,158	2160	-80	-4%
Spokane	13,769	13,764	13,112	12,826	12868	-571	-4%
Seattle	15,135	15,131	14,298	14,184	14061	-676	-5%
Green River	5,696	5,667	5,540	5,321	5293	-286	-5%
Bates	4,917	4,715	4,465	4,236	3976	-658	-14%
System Total	139,584	139,545	139,551	139,685	139520	87	0%

Table 4A: Annual FTES Allocation Target Attainment Rates 2014-15 as Baseline

Colleges/District	2014-15	2015-16	2016-17	2017-18	2018-19	Changes	% of Changes
Bates	63%	67%	71%	72%	83%	20%	32%
Green River	92%	89%	92%	98%	99%	7%	8%
Yakima Valley	97%	95%	95%	92%	97%	0%	0%
Seattle	90%	89%	94%	92%	88%	-2%	-2%
Lake Washington	98%	95%	96%	97%	94%	-4%	-4%
Clover Park	96%	95%	91%	93%	93%	-4%	-4%
Spokane	94%	93%	94%	94%	88%	-6%	-6%
Grays Harbor	95%	96%	95%	90%	88%	-7%	-7%
Pierce	101%	100%	100%	100%	93%	-7%	-7%
Edmonds	95%	93%	88%	89%	88%	-7%	-7%
Skagit Valley	100%	100%	96%	92%	92%	-8%	-8%
Big Bend	97%	100%	94%	89%	89%	-8%	-8%
Columbia Basin	101%	99%	98%	95%	93%	-8%	-8%
Highline	100%	100%	100%	100%	92%	-8%	-8%
Centralia	96%	89%	87%	88%	88%	-8%	-9%
Renton	99%	101%	98%	99%	88%	-11%	-11%
South Puget Sound	101%	99%	95%	92%	90%	-11%	-11%
Wenatchee Valley	101%	101%	98%	91%	90%	-11%	-11%
Bellingham	104%	106%	103%	98%	90%	-14%	-13%
Bellevue	111%	106%	100%	96%	95%	-16%	-14%
Whatcom	100%	100%	95%	93%	84%	-15%	-15%
Everett	109%	106%	100%	97%	91%	-18%	-16%
Peninsula	95%	90%	79%	80%	76%	-18%	-19%
Olympic	113%	106%	96%	91%	89%	-24%	-21%
Walla Walla	101%	98%	88%	87%	79%	-21%	-21%
Shoreline	96%	95%	79%	82%	74%	-22%	-22%
Clark	105%	94%	87%	82%	79%	-26%	-25%
Lower Columbia	115%	106%	92%	89%	85%	-30%	-26%
Cascadia	125%	126%	115%	103%	89%	-36%	-29%
Tacoma	131%	123%	102%	85%	81%	-50%	-38%
System Total	99%	97%	94%	92%	89%	-11%	-11%

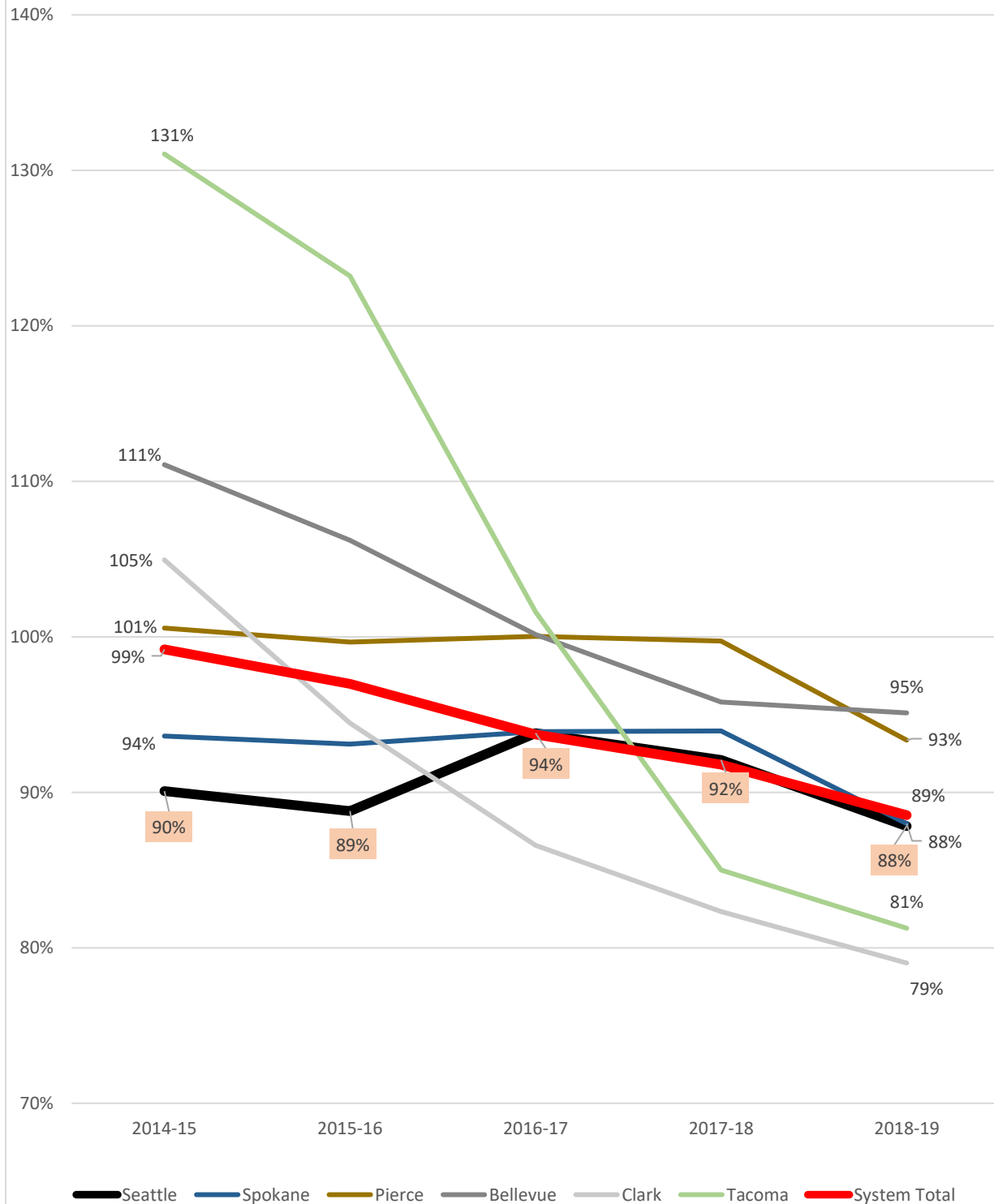
Note: Attainment rate is the actual state funded FTES divided by the allocation target. Actual State Funded FTES include 2% converted International FTES.

Table 4B: Annual FTES Allocation Target Attainment Rates Last 5 Year Average as Baseline

Colleges/District	2014-15	2015-16	2016-17	2017-18	2018-19	Change '19 to L5YAVG	% of Change '19 to L5YAVG
Bates	63%	67%	71%	72%	83%	12%	18%
Green River	92%	89%	92%	98%	99%	6%	6%
Yakima Valley	97%	95%	95%	92%	97%	1%	1%
Clover Park	96%	95%	91%	93%	93%	-2%	-2%
Lake Washington	98%	95%	96%	97%	94%	-4%	-4%
Centralia	96%	89%	87%	88%	88%	-4%	-4%
Seattle	90%	89%	94%	92%	88%	-5%	-5%
Edmonds	95%	93%	88%	89%	88%	-5%	-5%
Skagit Valley	100%	100%	96%	92%	92%	-6%	-6%
Spokane	94%	93%	94%	94%	88%	-6%	-6%
Pierce	101%	100%	100%	100%	93%	-6%	-6%
Columbia Basin	101%	99%	98%	95%	93%	-6%	-6%
Grays Harbor	95%	96%	95%	90%	88%	-6%	-7%
Big Bend	97%	100%	94%	89%	89%	-7%	-8%
Highline	100%	100%	100%	100%	92%	-9%	-8%
South Puget Sound	101%	99%	95%	92%	90%	-9%	-9%
Wenatchee Valley	101%	101%	98%	91%	90%	-10%	-10%
Bellevue	111%	106%	100%	96%	95%	-11%	-10%
Renton	99%	101%	98%	99%	88%	-10%	-11%
Everett	109%	106%	100%	97%	91%	-12%	-12%
Bellingham	104%	106%	103%	98%	90%	-13%	-13%
Whatcom	100%	100%	95%	93%	84%	-14%	-14%
Olympic	113%	106%	96%	91%	89%	-15%	-14%
Peninsula	95%	90%	79%	80%	76%	-13%	-14%
Shoreline	96%	95%	79%	82%	74%	-15%	-17%
Lower Columbia	115%	106%	92%	89%	85%	-18%	-18%
Walla Walla	101%	98%	88%	87%	79%	-18%	-18%
Clark	105%	94%	87%	82%	79%	-18%	-18%
Cascadia	125%	126%	115%	103%	89%	-31%	-25%
Tacoma	131%	123%	102%	85%	81%	-34%	-29%
System Total	99%	97%	94%	92%	89%	-8%	-9%

Note: Attainment rate is the actual state funded FTES divided by the allocation target. Actual State Funded FTES include 2% converted International FTES.

**Chart 3: Allocation Attainment Rate
Selected Colleges/Districts and System**



**Table 5: Percentage of '18-'19 Annual FTES Attainment Rates Over Last 3 Years
Average Attainment Rates from 2016-18**

Colleges/District	3 Years AVG Attainment Rate		% of '18-'19 attainment over 3Ys	AVG of 2016-18
	2016-18	2018-19		
Bates	70%	83%		118%
Green River	93%	99%		107%
Yakima Valley	94%	97%		103%
Clover Park	93%	93%		100%
Centralia	88%	88%		100%
Edmonds	90%	88%		98%
Lake Washington	96%	94%		98%
Seattle	92%	88%		96%
Skagit Valley	96%	92%		96%
Columbia Basin	97%	93%		96%
Big Bend	94%	89%		95%
South Puget Sound	95%	90%		95%
Bellevue	101%	95%		94%
Spokane	94%	88%		94%
Grays Harbor	94%	88%		94%
Pierce	100%	93%		94%
Wenatchee Valley	96%	90%		93%
Peninsula	83%	76%		92%
Highline	100%	92%		92%
Olympic	98%	89%		92%
Everett	101%	91%		90%
Clark	88%	79%		90%
Lower Columbia	96%	85%		89%
Renton	99%	88%		89%
Whatcom	96%	84%		88%
Bellingham	102%	90%		88%
Shoreline	85%	74%		87%
Walla Walla	91%	79%		87%
Tacoma	103%	81%		79%
Cascadia	115%	89%		78%
System Total	94%	89%		94%

Table 6A: International FTES 2014-15 as Baseline

Colleges/District	2014-15	2015-16	2016-17	2017-18	2018-19	18-19 % of Total FTES	Change '15 to '19	% of Change '15 to '19
Yakima Valley	1	3	9	19	17	0%	16	1185%
Grays Harbor	1	1	1	4	8	0%	7	807%
Bellingham	0	3	6	5	2	0%	2	319%
Renton	6	14	15	16	18	0%	12	193%
Walla Walla	8	11	17	25	22	1%	15	187%
Wenatchee Valley	4	1	0	6	12	0%	8	178%
Lower Columbia	16	21	22	26	28	1%	12	71%
Columbia Basin	6	6	7	7	8	0%	2	36%
Spokane Falls	223	164	185	286	282	6%	60	27%
Pierce Puyallup	24	30	50	49	29	1%	5	20%
Lake Washington	139	107	106	129	144	4%	5	3%
Olympic	130	135	132	150	134	2%	4	3%
Everett	439	510	488	487	443	6%	4	1%
Clover Park	42	45	44	43	42	1%	0	0%
Bellevue	1,345	1,438	1,533	1,413	1,286	11%	-59	-4%
Cascadia	400	493	487	433	371	14%	-29	-7%
Shoreline	1,185	1,208	1,074	1,097	1,046	20%	-139	-12%
Highline	544	588	657	652	474	6%	-70	-13%
Whatcom	339	399	356	310	287	7%	-52	-15%
Seattle South	766	840	713	660	598	11%	-167	-22%
Green River	2,264	2,260	2,207	2,011	1,765	19%	-499	-22%
Edmonds	1,898	1,775	1,738	1,560	1,376	19%	-522	-27%
Big Bend	10	14	11	7	7	0%	-3	-31%
Pierce Fort Steilacoom	415	453	463	353	281	5%	-134	-32%
South Puget Sound	173	149	110	97	107	2%	-66	-38%
Peninsula	132	153	136	100	81	4%	-51	-39%
Spokane	117	95	67	67	68	1%	-49	-42%
Tacoma	562	485	413	380	312	5%	-250	-44%
Seattle Central	2,435	1,945	1,727	1,527	1,343	20%	-1,093	-45%
Skagit Valley	221	212	203	171	119	3%	-102	-46%
Centralia	43	36	27	21	22	1%	-21	-50%
Seattle North	1,227	1,145	1,032	846	570	13%	-656	-54%
Bates	6	5	7	6	3	0%	-3	-54%
Clark	194	138	114	93	82	1%	-112	-58%
System Total	15,315	14,889	14,154	13,056	11,385	7%	-3,930	-26%

Table 6B: International FTES Last 4 Year Average as Baseline

Colleges/District	2014-15	2015-16	2016-17	2017-18	2018-19	18-19 % of Total FTES	Change '19 to L4YAVG	% of Change '19 to L4YAVG
Grays Harbor	1	1	1	4	8	0%	6	357%
Wenatchee Valley	4	1	0	6	12	0%	9	345%
Yakima Valley	1	3	9	19	17	0%	9	108%
Walla Walla	8	11	17	25	22	1%	7	47%
Renton	6	14	15	16	18	0%	5	40%
Spokane Falls	223	164	185	286	282	6%	68	32%
Lower Columbia	16	21	22	26	28	1%	6	30%
Lake Washington	139	107	106	129	144	4%	23	19%
Columbia Basin	6	6	7	7	8	0%	1	18%
Olympic	130	135	132	150	134	2%	-3	-2%
Clover Park	42	45	44	43	42	1%	-1	-3%
Everett	439	510	488	487	443	6%	-38	-8%
Shoreline	1,185	1,208	1,074	1,097	1,046	20%	-95	-8%
Bellevue	1,345	1,438	1,533	1,413	1,286	11%	-147	-10%
Cascadia	400	493	487	433	371	14%	-82	-18%
Whatcom	339	399	356	310	287	7%	-64	-18%
South Puget Sound	173	149	110	97	107	2%	-25	-19%
Green River	2,264	2,260	2,207	2,011	1,765	19%	-421	-19%
Seattle South	766	840	713	660	598	11%	-146	-20%
Edmonds	1,898	1,775	1,738	1,560	1,376	19%	-366	-21%
Spokane	117	95	67	67	68	1%	-19	-22%
Highline	544	588	657	652	474	6%	-136	-22%
Pierce Puyallup	24	30	50	49	29	1%	-10	-25%
Seattle Central	2,435	1,945	1,727	1,527	1,343	20%	-566	-30%
Centralia	43	36	27	21	22	1%	-10	-32%
Tacoma	562	485	413	380	312	5%	-148	-32%
Pierce Fort Steilacoom	415	453	463	353	281	5%	-140	-33%
Big Bend	10	14	11	7	7	0%	-4	-35%
Peninsula	132	153	136	100	81	4%	-49	-38%
Clark	194	138	114	93	82	1%	-53	-39%
Skagit Valley	221	212	203	171	119	3%	-83	-41%
Bellingham	0	3	6	5	2	0%	-1	-41%
Seattle North	1,227	1,145	1,032	846	570	13%	-492	-46%
Bates	6	5	7	6	3	0%	-4	-56%
System Total	15,315	14,889	14,154	13,056	11,385	7%	-2,968	-21%

Note: SBCTC started reporting International FTES from 2014-15, so that the baseline is 4 year average instead of 5 year average.

Chart 4: International FTES Trends for Selected Colleges

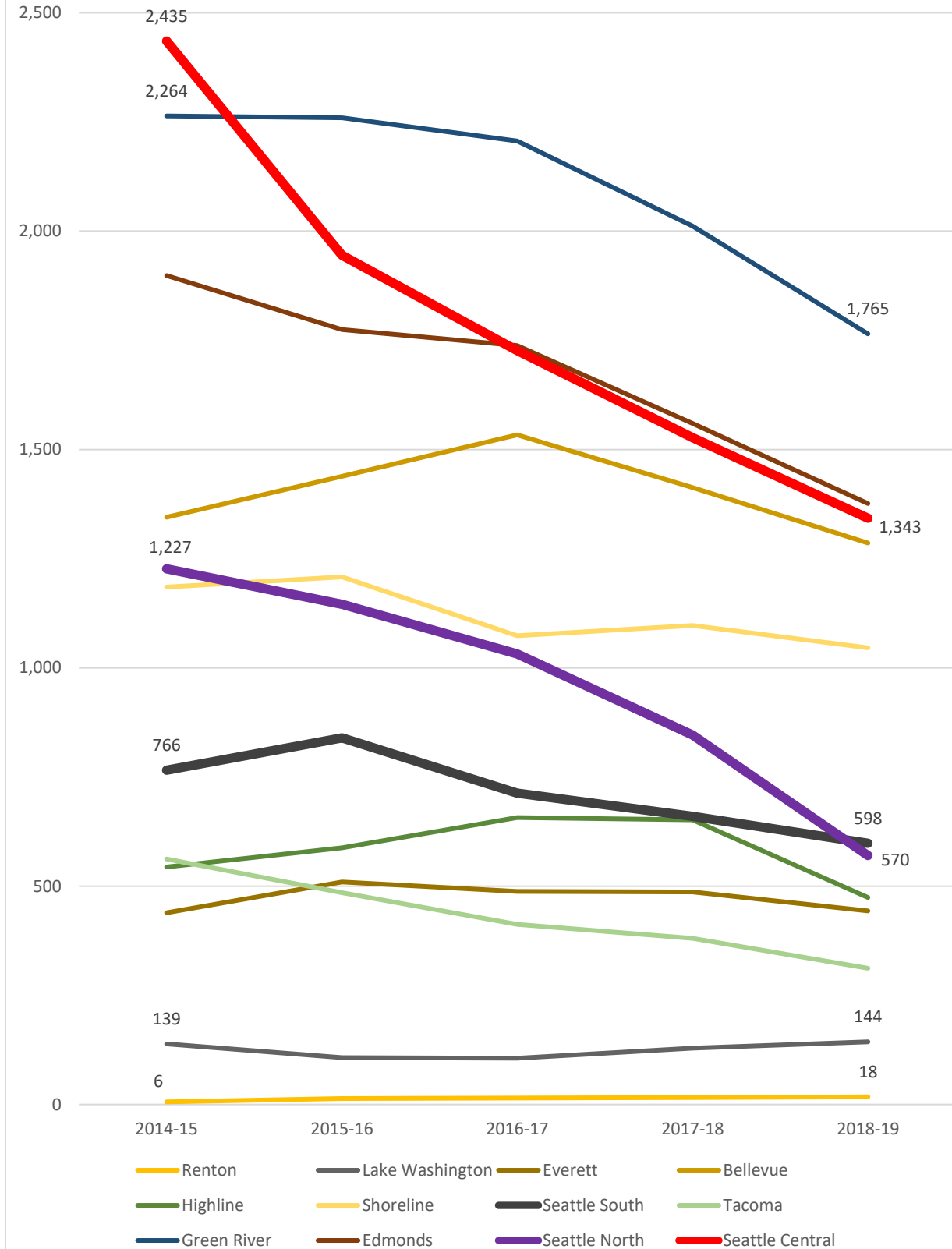


Table 7A: eLearning FTES 2014-15 as Baseline

College	2014-15	2015-16	2016-17	2017-18	2018-19	18-19 % of Total FTES	Change '15 to '19	% of Change '15 to '19
Bates	179	239	372	414	484	13%	305	171%
Seattle Central	786	1,072	1,294	1,630	1,794	26%	1008	128%
Renton	672	707	966	1,287	1,270	33%	598	89%
Clover Park	1,016	1,208	1,366	1,680	1,841	43%	825	81%
Big Bend	428	548	584	634	696	35%	268	63%
South Puget Sound	1,004	1,203	1,323	1,459	1,592	35%	588	59%
Clark	1,724	1,826	2,134	2,380	2,626	33%	902	52%
Cascadia	524	697	720	770	785	29%	260	50%
Columbia Basin	1,234	1,311	1,438	1,707	1,825	31%	592	48%
Green River	2,091	2,367	2,657	2,701	3,092	34%	1000	48%
Yakima Valley	1,093	1,170	1,321	1,398	1,605	36%	512	47%
Whatcom	707	778	840	928	1,020	26%	313	44%
Wenatchee Valley	480	522	523	603	680	21%	200	42%
Lake Washington	700	787	781	994	989	29%	290	41%
Lower Columbia	928	846	890	1,135	1,272	42%	344	37%
Centralia	768	829	937	1,085	1,047	40%	279	36%
Pierce Fort Steilacoom	2,060	2,211	2,306	2,439	2,739	53%	680	33%
Spokane	2,120	2,175	2,244	2,570	2,772	31%	652	31%
Bellingham	542	705	708	765	679	32%	137	25%
Walla Walla	644	708	703	748	790	19%	146	23%
Bellevue	4,211	4,287	4,605	4,779	5,146	43%	936	22%
Seattle South	831	976	945	948	1,013	19%	182	22%
Olympic	1,563	1,507	1,628	1,771	1,889	33%	326	21%
Tacoma	1,955	1,883	1,877	2,153	2,338	39%	383	20%
Grays Harbor	824	974	856	984	980	48%	157	19%
Highline	1,726	1,809	1,889	2,035	1,992	26%	266	15%
Shoreline	2,048	2,086	2,148	2,350	2,353	45%	304	15%
Pierce Puyallup	422	445	530	566	456	15%	34	8%
Spokane Falls	1,736	1,663	1,815	2,007	1,865	43%	128	7%
Edmonds	3,257	3,196	3,020	3,138	3,384	46%	127	4%
Skagit Valley	1,703	1,733	1,684	1,617	1,760	41%	57	3%
Seattle North	1,673	1,673	1,739	1,705	1,729	39%	56	3%
Everett	2,489	2,369	2,456	2,510	2,357	31%	-133	-5%
Peninsula	851	935	769	797	767	39%	-83	-10%
System Total	44,990	47,443	50,068	54,690	57,630	34%	12640	28%

Table 7B: eLearning FTES Last 5 Year Average as Baseline

College	2014-15	2015-16	2016-17	2017-18	2018-19	'18-'19 % of Total FTES	Change '19 to L5YAVG	% of Change '19 to L5YAVG
Bates	179	239	372	414	484	13%	219	83%
Seattle Central	786	1,072	1,294	1,630	1,794	26%	721	67%
Clover Park	1,016	1,208	1,366	1,680	1,841	43%	639	53%
Renton	672	707	966	1,287	1,270	33%	439	53%
Lower Columbia	928	846	890	1,135	1,272	42%	339	36%
Big Bend	428	548	584	634	696	35%	182	35%
Clark	1,724	1,826	2,134	2,380	2,626	33%	686	35%
South Puget Sound	1,004	1,203	1,323	1,459	1,592	35%	403	34%
Columbia Basin	1,234	1,311	1,438	1,707	1,825	31%	462	34%
Yakima Valley	1,093	1,170	1,321	1,398	1,605	36%	402	33%
Green River	2,091	2,367	2,657	2,701	3,092	34%	755	32%
Whatcom	707	778	840	928	1,020	26%	236	30%
Lake Washington	700	787	781	994	989	29%	226	30%
Wenatchee Valley	480	522	523	603	680	21%	155	30%
Spokane	2,120	2,175	2,244	2,570	2,772	31%	590	27%
Pierce Fort Steilacoom	2,060	2,211	2,306	2,439	2,739	53%	532	24%
Centralia	768	829	937	1,085	1,047	40%	177	20%
Cascadia	524	697	720	770	785	29%	128	20%
Tacoma	1,955	1,883	1,877	2,153	2,338	39%	382	20%
Seattle South	831	976	945	948	1,013	19%	152	18%
Bellevue	4,211	4,287	4,605	4,779	5,146	43%	762	17%
Olympic	1,563	1,507	1,628	1,771	1,889	33%	271	17%
Walla Walla	644	708	703	748	790	19%	102	15%
Grays Harbor	824	974	856	984	980	48%	97	11%
Shoreline	2,048	2,086	2,148	2,350	2,353	45%	228	11%
Highline	1,726	1,809	1,889	2,035	1,992	26%	173	9%
Pierce Puyallup	422	445	530	566	456	15%	36	9%
Edmonds	3,257	3,196	3,020	3,138	3,384	46%	229	7%
Seattle North	1,673	1,673	1,739	1,705	1,729	39%	74	4%
Spokane Falls	1,736	1,663	1,815	2,007	1,865	43%	67	4%
Skagit Valley	1,703	1,733	1,684	1,617	1,760	41%	60	4%
Bellingham	542	705	708	765	679	32%	14	2%
Everett	2,489	2,369	2,456	2,510	2,357	31%	-95	-4%
Peninsula	851	935	769	797	767	39%	-59	-7%
System Total	44,990	47,443	50,068	54,690	57,630	34%	9785	20%

Chart 5: eLearning FTES, Selected Peer Colleges

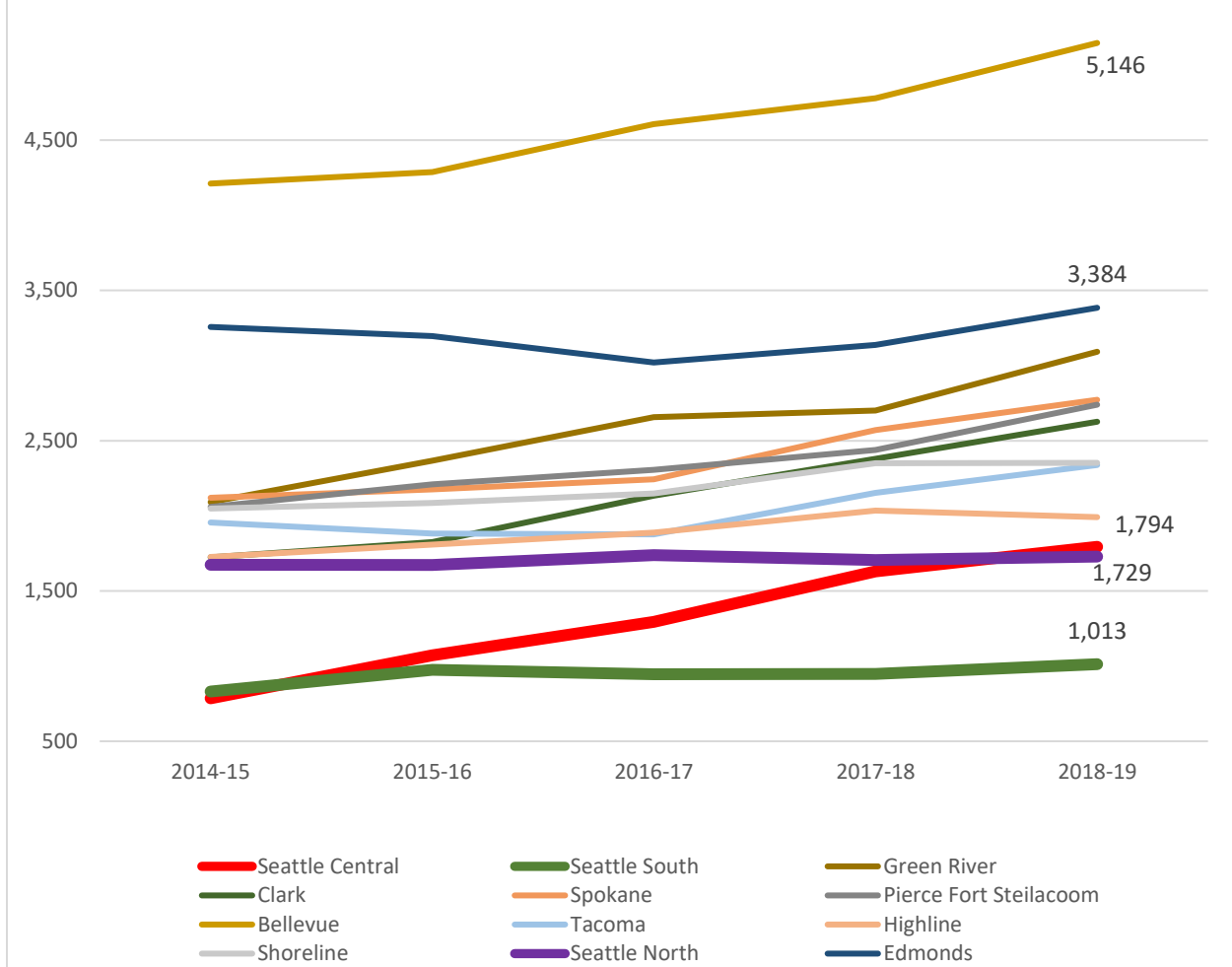


Chart 6: eLearning FTES , Percent of Total FTES, 2018-19

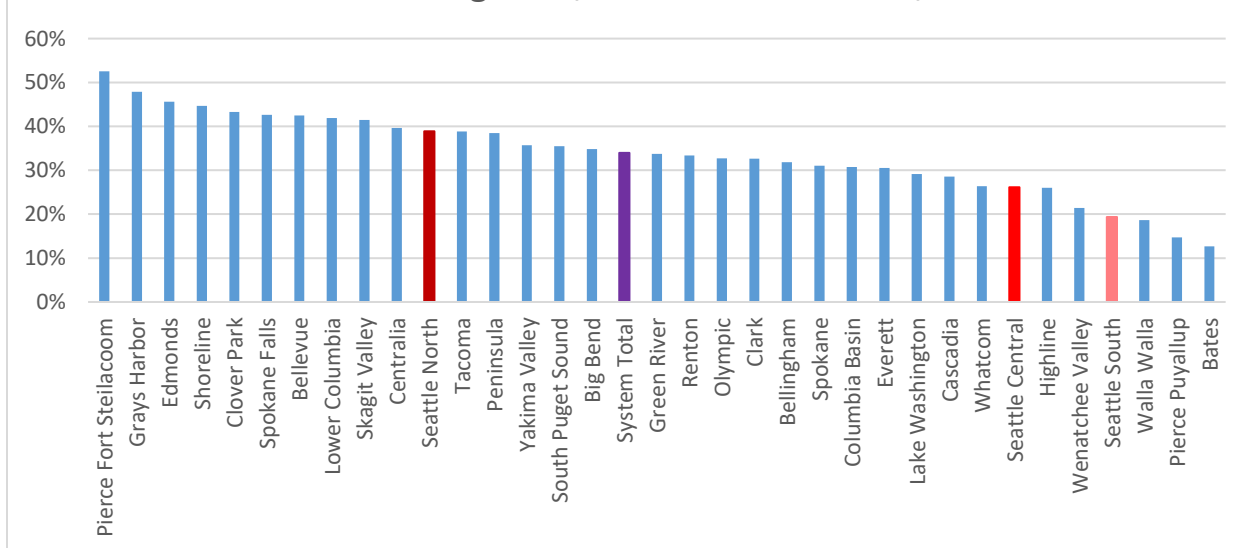


Table 8A: Running Start FTES 2014-15 as Baseline

Colleges/District	2014-15	2015-16	2016-17	2017-18	2018-19	'18-'19 % of Total FTES	Change '15 to '19	% of Change '15 to '19
Lake Washington	11	18	62	98	118	3%	107	965%
Seattle Central	207	250	317	472	535	8%	328	159%
Bates	2	6	8	9	5	0%	3	157%
Pierce Fort Steilacoom	454	555	632	770	922	18%	468	103%
Seattle South	221	244	305	378	405	8%	184	83%
Spokane	351	354	394	471	581	7%	230	65%
Clover Park	47	54	80	76	75	2%	28	61%
Green River	1,106	1,264	1,402	1,540	1,763	19%	657	59%
Bellevue	1,420	1,781	1,961	2,046	2,233	18%	813	57%
Wenatchee Valley	500	505	643	785	779	25%	278	56%
Seattle North	210	222	262	273	321	7%	111	53%
Olympic	654	706	794	905	981	17%	327	50%
Grays Harbor	166	209	210	216	248	12%	82	50%
Cascadia	418	490	545	561	625	23%	207	49%
Big Bend	267	337	379	362	396	20%	129	48%
Shoreline	171	183	232	241	250	5%	79	46%
Edmonds	554	560	662	800	808	11%	255	46%
Columbia Basin	791	779	748	887	1,135	19%	344	44%
Everett	799	865	952	984	1,139	15%	340	43%
Walla Walla	137	140	163	197	195	5%	58	42%
Tacoma	649	761	762	892	916	15%	268	41%
Bellingham	54	61	83	83	76	4%	22	41%
South Puget Sound	779	877	1,004	1,063	1,097	24%	319	41%
Yakima Valley	422	485	525	544	584	13%	162	38%
Centralia	296	352	365	391	394	15%	98	33%
Pierce Puyallup	789	931	937	1,021	1,045	34%	256	32%
Highline	1,041	1,195	1,333	1,360	1,338	17%	298	29%
Lower Columbia	315	307	367	424	400	13%	85	27%
Clark	1,550	1,750	1,932	1,953	1,944	24%	394	25%
Whatcom	569	614	663	638	654	17%	85	15%
Skagit Valley	449	476	447	481	491	12%	42	9%
Peninsula	287	287	269	294	307	15%	20	7%
Spokane Falls	574	592	649	660	591	14%	17	3%
Renton	96	110	114	117	96	3%	0	0%
System Total	16,371	18,334	20,207	21,992	23,447	14%	7,076	43%

Table 8B: Running Start FTES Last 5 Year Average as Baseline

Colleges/District	2014-15	2015-16	2016-17	2017-18	2018-19	'18-'19 % of Total FTES	Change '19 to L5YAVG	% of Change '19 to L5YAVG
Lake Washington	11	18	62	98	118	3%	78	191%
Seattle Central	207	250	317	472	535	8%	245	84%
Pierce Fort								
Steilacoom	454	555	632	770	922	18%	362	65%
Spokane	351	354	394	471	581	7%	217	60%
Seattle South	221	244	305	378	405	8%	142	54%
Columbia Basin	791	779	748	887	1,135	19%	347	44%
Green River	1,106	1,264	1,402	1,540	1,763	19%	513	41%
Seattle North	210	222	262	273	321	7%	89	38%
Wenatchee Valley	500	505	643	785	779	25%	202	35%
Grays Harbor	166	209	210	216	248	12%	61	32%
Olympic	654	706	794	905	981	17%	238	32%
Bellevue	1,420	1,781	1,961	2,046	2,233	18%	541	32%
Everett	799	865	952	984	1,139	15%	265	30%
Cascadia	418	490	545	561	625	23%	145	30%
Edmonds	554	560	662	800	808	11%	185	30%
Big Bend	267	337	379	362	396	20%	87	28%
Shoreline	171	183	232	241	250	5%	54	28%
Clover Park	47	54	80	76	75	2%	16	27%
Yakima Valley	422	485	525	544	584	13%	123	27%
Tacoma	649	761	762	892	916	15%	190	26%
South Puget Sound	779	877	1,004	1,063	1,097	24%	226	26%
Walla Walla	137	140	163	197	195	5%	38	24%
Pierce Puyallup	789	931	937	1,021	1,045	34%	178	21%
Lower Columbia	315	307	367	424	400	13%	62	18%
Centralia	296	352	365	391	394	15%	57	17%
Bellingham	54	61	83	83	76	4%	11	16%
Highline	1,041	1,195	1,333	1,360	1,338	17%	161	14%
Clark	1,550	1,750	1,932	1,953	1,944	24%	218	13%
Peninsula	287	287	269	294	307	15%	31	11%
Skagit Valley	449	476	447	481	491	12%	43	10%
Whatcom	569	614	663	638	654	17%	41	7%
Spokane Falls	574	592	649	660	591	14%	-17	-3%
Bates	2	6	8	9	5	0%	0	-6%
Renton	96	110	114	117	96	3%	-7	-7%
System Total	16,371	18,334	20,207	21,992	23,447	14%	5,127	28%

Chart 7: Running Start FTES, Percent of Total FTES, 2018-19

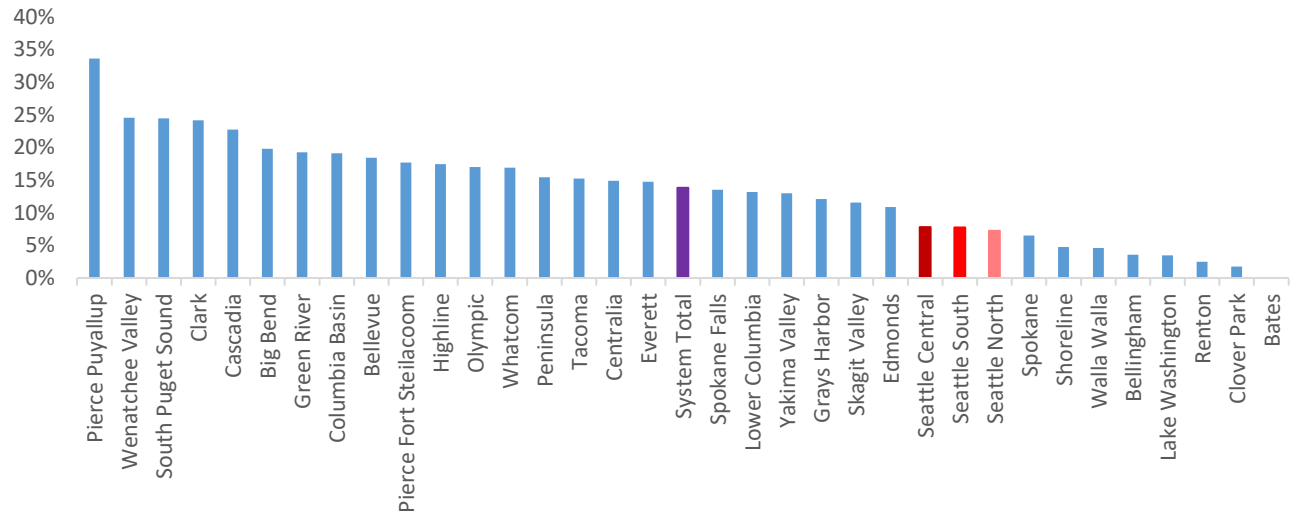


Table 9A: Apprenticeship FTES 2014-15 as Baseline

Colleges/District	2014-15	2015-16	2016-17	2017-18	2018-19	'18-'19 % of Total FTES	Change '15 to '19	% of Change '15 to '19
Bates	208	196	200	197	645	16.8%	437	210%
Edmonds	0	0	0	2	2	0.0%	2	200%
Bellingham	2	5	6	9	6	0.3%	4	176%
Wenatchee Valley	2	4	5	4	3	0.1%	2	100%
Skagit Valley	186	217	250	269	360	8.5%	174	94%
Columbia Basin	134	165	196	217	240	4.0%	106	79%
Seattle South	763	930	1,106	1,364	1,335	26%	572	75%
Spokane	433	547	549	556	753	8.4%	320	74%
Grays Harbor	4	6	5	5	5	0.2%	1	34%
Clark	34	36	39	38	45	0.6%	12	34%
Lake Washington	56	84	89	110	70	2.1%	14	25%
Clover Park	8	8	6	8	10	0.2%	2	19%
Renton	320	404	464	512	380	10.0%	60	19%
Everett	29	34	35	32	31	0.4%	2	8%
Olympic	607	648	546	493	529	9.2%	-78	-13%
Highline	2	2	2	1	1	0.0%	0	-19%
Green River	3	1	2	2	2	0.0%	-1	-20%
Centralia	5	4	4	5	1	0.0%	-4	-81%
Lower Columbia	2	0	0	0	0	0.0%	-1	-81%
South Puget Sound	1	0	0	0	0	0.0%	-1	-100%
System Total	2,797	3,292	3,505	3,827	4,419	3%	1623	58%

Table 9B: Apprenticeship FTES Last 5 Year Average as Baseline

Colleges/District	2014-15	2015-16	2016-17	2017-18	2018-19	'18-'19 % of Total FTES	Change '19 to L5YAVG	% of Change '19 to L5YAVG
Edmonds	0	0	0	2	2	0.0%	2	325%
Bates	208	196	200	197	645	16.8%	451	233%
Skagit Valley	186	217	250	269	360	8.5%	148	69%
Spokane	433	547	549	556	753	8.4%	273	57%
Columbia Basin	134	165	196	217	240	4.0%	73	44%
Seattle South	763	930	1,106	1,364	1,335	26%	382	40%
Clover Park	8	8	6	8	10	0.2%	3	36%
Clark	34	36	39	38	45	0.6%	12	36%
Bellingham	2	5	6	9	6	0.3%	1	16%
Grays Harbor	4	6	5	5	5	0.2%	0	5%
Everett	29	34	35	32	31	0.4%	1	2%
Wenatchee Valley	2	4	5	4	3	0.1%	0	1%
Renton	320	404	464	512	380	10.0%	-7	-2%
Olympic	607	648	546	493	529	9.2%	-16	-3%
Green River	3	1	2	2	2	0.0%	0	-6%
Lake Washington	56	84	89	110	70	2.1%	-5	-6%
Highline	2	2	2	1	1	0.0%	-1	-37%
Lower Columbia	2	0	0	0	0	0.0%	0	-52%
Centralia	5	4	4	5	1	0.0%	-3	-76%
South Puget Sound	1	0	0	0	0	0.0%	0	-100%
System Total	2,797	3,292	3,505	3,827	4,419	3%	1312	42%

Table 10A: Adult Basic Education (ABE) FTES 2014-15 as Baseline

College	2014-15	2015-16	2016-17	2017-18	2018-19	'18-'19 % of Total FTES	Change '15 to '19	% of Change '15 to '19
Bellevue	534	536	493	579	658	5%	124	23%
South Puget Sound	215	258	260	265	260	6%	45	21%
Green River	769	734	734	806	890	10%	122	16%
Lake Washington	569	611	683	691	657	19%	88	15%
Big Bend	168	224	198	185	185	9%	17	10%
Peninsula	203	219	229	176	217	11%	14	7%
Clover Park	264	270	261	270	282	7%	18	7%
Seattle Central	828	850	849	834	872	13%	45	5%
Wenatchee Valley	199	247	239	182	204	6%	5	3%
Spokane Falls	0	0	0	0	0	0%	0	0%
Whatcom	214	223	227	210	210	5%	-4	-2%
Seattle North	530	559	586	542	509	11%	-22	-4%
Highline	2,075	2,007	2,161	2,178	1,981	26%	-94	-5%
Edmonds	874	858	784	805	827	11%	-48	-5%
Tacoma	386	366	313	322	361	6%	-25	-6%
Everett	693	646	723	669	647	8%	-46	-7%
Spokane	1,949	2,367	2,344	2,259	1,770	20%	-178	-9%
Olympic	228	214	227	207	202	4%	-26	-11%
Bellingham	114	118	115	111	99	5%	-14	-13%
Skagit Valley	450	518	467	466	389	9%	-61	-13%
Renton	1,282	1,302	1,220	1,191	1,091	29%	-191	-15%
Yakima Valley	770	776	757	609	647	14%	-123	-16%
Pierce Puyallup	321	362	276	279	264	8%	-57	-18%
Cascadia	184	178	163	161	146	5%	-38	-21%
Clark	780	730	713	666	610	8%	-170	-22%
Shoreline	563	584	407	403	406	8%	-157	-28%
Lower Columbia	779	754	648	652	557	18%	-222	-28%
Walla Walla	338	369	306	359	226	5%	-112	-33%
Pierce Fort								
Steilacoom	338	329	250	249	226	4%	-112	-33%
Columbia Basin	648	631	569	489	406	7%	-242	-37%
Seattle South	930	865	798	735	549	10%	-381	-41%
Centralia	381	319	249	196	187	7%	-194	-51%
Grays Harbor	337	388	230	209	160	8%	-177	-52%
Bates	457	420	437	118	55	1%	-402	-88%
System Total	19,448	19,898	18,994	18,072	16,751	10%	-2,697	-14%

Table 10B: Adult Basic Education (ABE) FTES Last 5 Year Average as Baseline

College	2014-15	2015-16	2016-17	2017-18	2018-19	'18-'19 % of Total FTES	Change '19 to L5YAVG	% of Change '19 to L5YAVG
Bellevue	534	536	493	579	658	5%	119	22%
Green River	769	734	734	806	890	10%	116	15%
South Puget Sound	215	258	260	265	260	6%	16	7%
Lake Washington	569	611	683	691	657	19%	38	6%
Clover Park	264	270	261	270	282	7%	9	3%
Seattle Central	828	850	849	834	872	13%	26	3%
Peninsula	203	219	229	176	217	11%	4	2%
Tacoma	386	366	313	322	361	6%	6	2%
Edmonds	874	858	784	805	827	11%	-6	-1%
Spokane	1,949	2,367	2,344	2,259	1,770	20%	-30	-2%
Big Bend	168	224	198	185	185	9%	-4	-2%
Whatcom	214	223	227	210	210	5%	-6	-3%
Everett	693	646	723	669	647	8%	-31	-5%
Highline	2,075	2,007	2,161	2,178	1,981	26%	-112	-5%
Seattle North	530	559	586	542	509	11%	-44	-8%
Olympic	228	214	227	207	202	4%	-20	-9%
Wenatchee Valley	199	247	239	182	204	6%	-22	-10%
Bellingham	114	118	115	111	99	5%	-11	-10%
Yakima Valley	770	776	757	609	647	14%	-95	-13%
Renton	1,282	1,302	1,220	1,191	1,091	29%	-165	-13%
Pierce Puyallup	321	362	276	279	264	8%	-43	-14%
Skagit Valley	450	518	467	466	389	9%	-77	-16%
Cascadia	184	178	163	161	146	5%	-30	-17%
Clark	780	730	713	666	610	8%	-134	-18%
Shoreline	563	584	407	403	406	8%	-93	-19%
Lower Columbia	779	754	648	652	557	18%	-149	-21%
Pierce Fort								
Steilacoom	338	329	250	249	226	4%	-92	-29%
Columbia Basin	648	631	569	489	406	7%	-197	-33%
Walla Walla	338	369	306	359	226	5%	-125	-35%
Seattle South	930	865	798	735	549	10%	-313	-36%
Centralia	381	319	249	196	187	7%	-114	-38%
Grays Harbor	337	388	230	209	160	8%	-136	-46%
Bates	457	420	437	118	55	1%	-298	-84%
Spokane Falls	0	0	0	0	0	0%	-353	-100%
System Total	19,448	19,898	18,994	18,072	16,751	10%	-2,433	-13%

Table 11A: Bachelors of Applied Sciences (BAS) FTES 2014-15 as Baseline

College	2014-15	2015-16	2016-17	2017-18	2018-19	'18-'19 % of Total FTES	Change '15 to '19	% of Change '15 to '19
<i>Pierce Fort Steilacoom</i>	0	0	62	121	156	3.0%	156	15600%
Clark	0	62	76	106	128	1.6%	128	12800%
Grays Harbor	0	2	35	57	84	4.1%	84	8400%
Spokane Falls	0	8	42	63	76	1.7%	76	7600%
Tacoma	0	0	5	17	43	0.7%	43	4300%
Wenatchee Valley	0	1	1	29	36	1.1%	36	3600%
Whatcom	0	0	0	14	32	0.8%	32	3200%
Edmonds	0	0	0	14	31	0.4%	31	3100%
Spokane	0	0	0	22	28	0.3%	28	2800%
Cascadia	0	17	36	27	26	1.0%	26	2600%
Bellingham	0	0	6	12	25	1.2%	25	2500%
Highline	28	81	118	197	241	3.1%	212	756%
Walla Walla					7	0.2%	7	700%
Renton	9	20	34	48	51	1.4%	43	476%
Yakima Valley	28	72	124	134	154	3.4%	127	459%
Green River	82	179	315	396	456	5.0%	374	454%
Seattle North	48	94	136	194	227	5%	179	375%
Centralia Lake	63	74	100	174	216	8.2%	153	244%
Washington	74	95	116	200	238	7.0%	164	222%
Skagit Valley	15	22	23	20	44	1.0%	29	196%
Bellevue	227	293	368	490	627	5.2%	399	176%
Seattle Central	80	123	146	198	211	3%	132	165%
Olympic Columbia Basin	56	97	112	121	136	2.4%	80	144%
Pierce	166	225	288	323	351	5.9%	185	111%
Puyallup	0	0	0	1	1	0.0%	1	100%
Clover Park	19	21	17	31	26	0.6%	6	33%
Peninsula	55	53	52	50	47	2.4%	-8	-14%
Seattle South	87	92	96	80	59	1%	-28	-32%
System Total	1,034	1,633	2,307	3,138	3,759	2%	2726	264%

Table 11B: Bachelors of Applied Sciences (BAS) FTES Last 5 Year Average as Baseline

College	2014-15	2015-16	2016-17	2017-18	2018-19	'18-'19 % of Total FTES	Change '19 to L5YAVG	% of Change '19 to L5YAVG
Whatcom	0	0	0	14	32	0.8%	29	1046%
Edmonds	0	0	0	14	31	0.4%	29	1028%
Tacoma	0	0	5	17	43	0.7%	38	879%
Walla Walla					7	0.2%	7	700%
Bellingham	0	0	6	12	25	1.2%	21	562%
Spokane	0	0	0	22	28	0.3%	24	558%
Wenatchee Valley	0	1	1	29	36	1.1%	30	477%
Pierce Puyallup	0	0	0	1	1	0.0%	1	368%
Grays Harbor	0	2	35	57	84	4.1%	65	344%
Pierce Fort								
Steilacoom	0	0	62	121	156	3.0%	120	325%
Spokane Falls	0	8	42	63	76	1.7%	53	236%
Highline	28	81	118	197	241	3.1%	156	184%
Skagit Valley	15	22	23	20	44	1.0%	28	179%
Clark	0	62	76	106	128	1.6%	79	161%
Seattle North	48	94	136	194	227	5%	130	134%
Centralia	63	74	100	174	216	8.2%	123	133%
Renton	9	20	34	48	51	1.4%	29	132%
Green River	82	179	315	396	456	5.0%	258	130%
Lake Washington	74	95	116	200	238	7.0%	133	125%
Yakima Valley	28	72	124	134	154	3.4%	83	115%
Bellevue	227	293	368	490	627	5.2%	329	110%
Seattle Central	80	123	146	198	211	3%	91	76%
Cascadia	0	17	36	27	26	1.0%	10	65%
Olympic	56	97	112	121	136	2.4%	53	63%
Columbia Basin	166	225	288	323	351	5.9%	128	58%
Clover Park	19	21	17	31	26	0.6%	8	44%
Peninsula	55	53	52	50	47	2.4%	-10	-17%
Seattle South	87	92	96	80	59	1%	-29	-33%
System Total	1,034	1,633	2,307	3,138	3,759	2%	2007	115%